

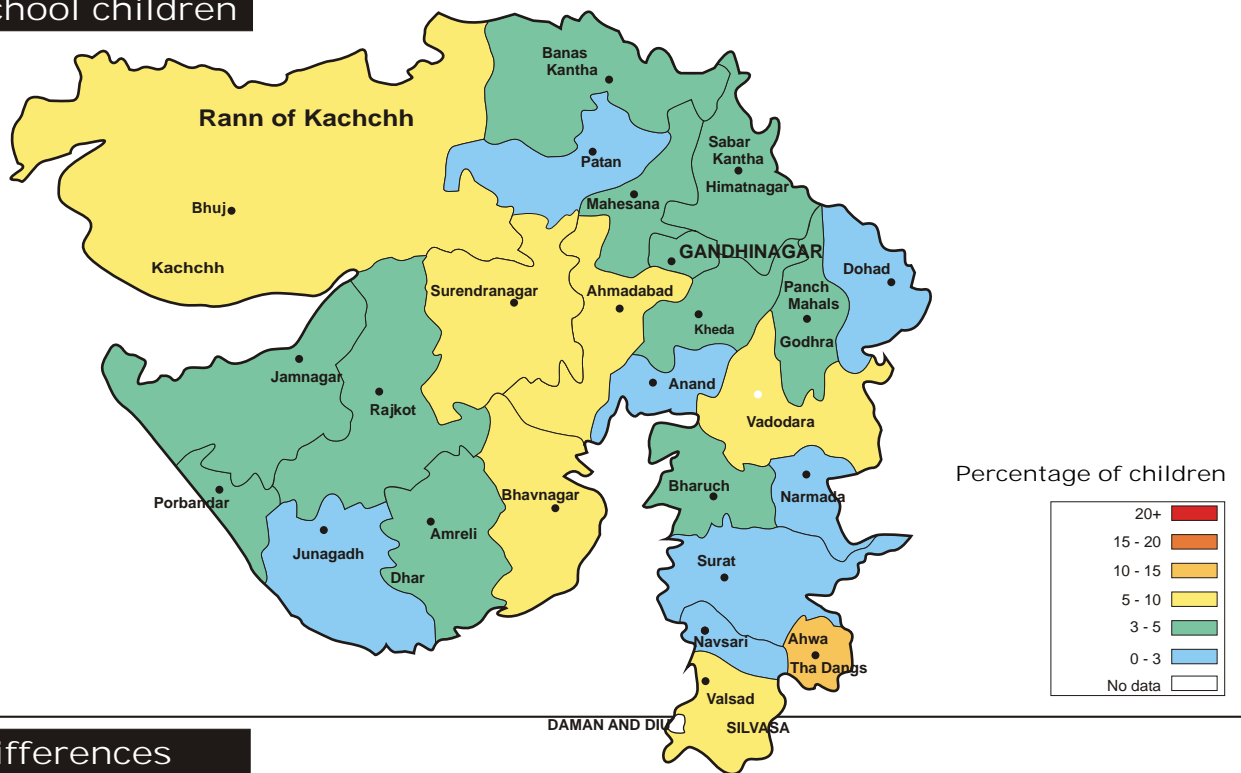
GUJARAT RURAL

All analyses based on data from 25 out of 25 districts

Enrollment

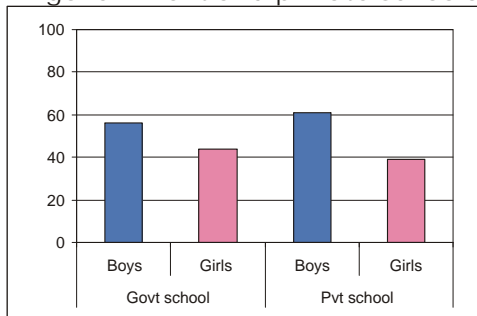
	% Children in different types of schools				% Children not in school		Total
	Government	Private	Madarsa	EGS	Never Enrolled	Drop Out	
Age : 6-14 ALL	87.8	7.5	0.6	0.6	1.3	2.3	100
Age : 6-10 ALL	90.0	6.8	0.6	0.5	1.2	0.9	100
Age : 11-14 ALL	84.7	8.6	0.5	0.7	1.2	4.3	100
Age : 6-10 BOYS	89.6	7.6	0.6	0.5	0.9	0.8	100
Age : 6-10 GIRLS	90.6	5.7	0.6	0.4	1.6	1.2	100
Age : 11-14 BOYS	85.9	9.1	0.5	0.6	0.7	3.2	100
Age : 11-14 GIRLS	83.2	8.0	0.5	0.7	1.8	5.8	100

Out-of-school children

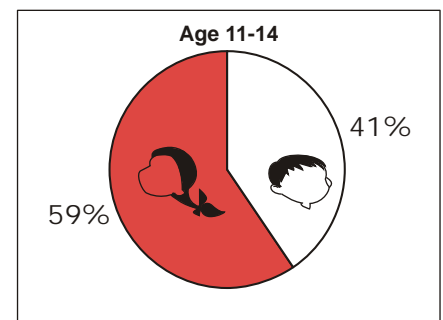
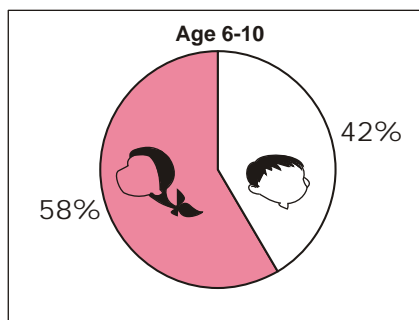


Gender differences

Percentage of boys and girls in government and private schools



Out-of-school children: Proportion of girls and boys.



Learning

	% Children who CANNOT read ...		% Children who CANNOT solve numerical written sums of ...	
	Level 1*	Level 2**	Subtraction or Division	Division
Age : 7-14 ALL	34.2	53.7	40.0	62.7
Age : 7-10 ALL	47.6	68.9	52.8	73.7
Age : 11-14 ALL	15.8	32.8	22.8	48.1
Govt : Std II-V	46.7	67.7	53.8	75.6
Pvt : Std II-V	33.0	60.1	21.8	48.3
Govt : Std VI-VIII	11.3	27.9	19.4	46.2
Pvt : Std VI-VIII	17.5	33.8	13.1	30.1

* Level - 1: Ability to read a small paragraph with short sentences of std 1 level difficulty.

**Level - 2: Ability to read a 'story' text with some long sentences of std 2 level difficulty.

Subtraction:
2 digit subtraction with borrowing.

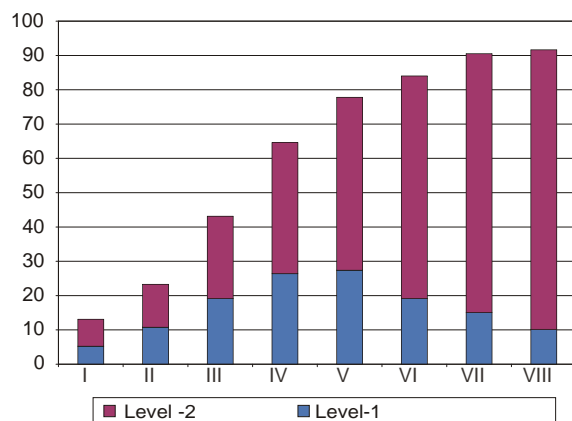
Division:
3 digit divided by 1 digit.

Learning curves

Children who CAN read and solve numerical written sums

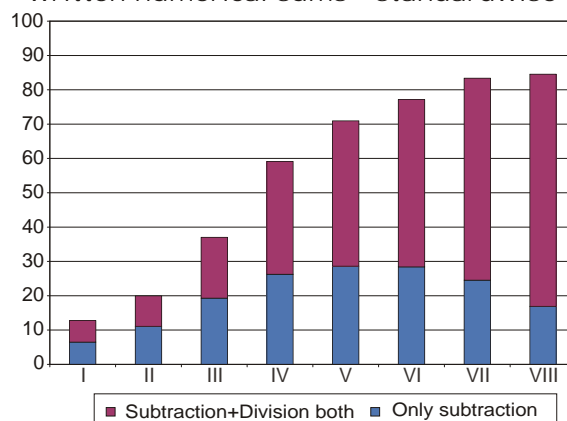
Reading

% All school children who can read-standardwise



Arithmetic

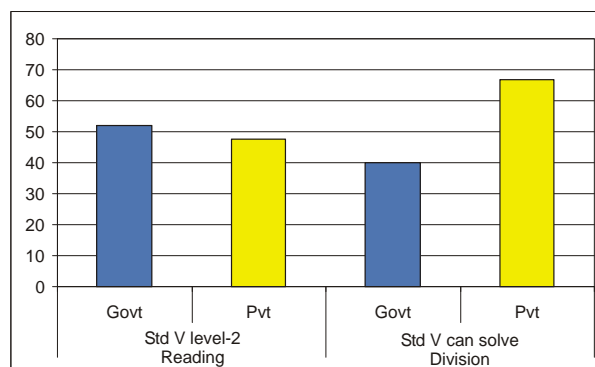
% All school children who can solve written numerical sums - standardwise



Performance of top five and bottom five districts in state based on % all children Std V

Reading	% Std V CANNOT read level-2	Arithmetic	% Std V CANNOT solve division
Top - 5		Top - 5	
Bhavnagar	15.1	Patan	8.7
Anand	19.1	Tha Dangs	18.0
Banas Kantha	25.9	Surat	20.3
Bharuch	29.7	Navsari	30.3
Gandhinagar	31.0	Mahesana	39.7
Bottom - 5		Bottom - 5	
Porbandar	89.2	Porbandar	91.2
Surat	82.6	Ahmadabad	88.7
Patan	79.1	Amreli	82.1
Tha Dangs	71.4	Kheda	81.8
Junagadh	68.1	Junagadh	78.4

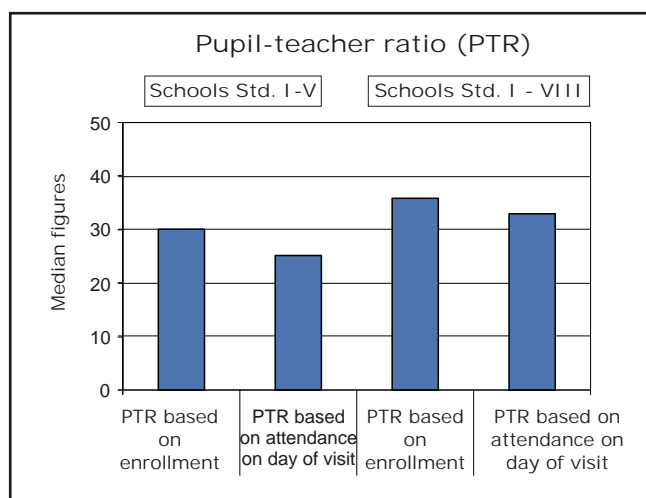
Comparison of government and private schools based on % Std. V children who CAN read level-2 and solve written numerical sums



Teachers, children, and classrooms

Teachers' attendance		
	Schools with:	
	Std. I-IV/V	Std. I - VIII
Total number of schools visited	41	399
% teachers attending (average)	79.9	84.8
% of schools with NO teachers present	12.2	4.5
% of schools with ALL teachers present	63.4	51.6

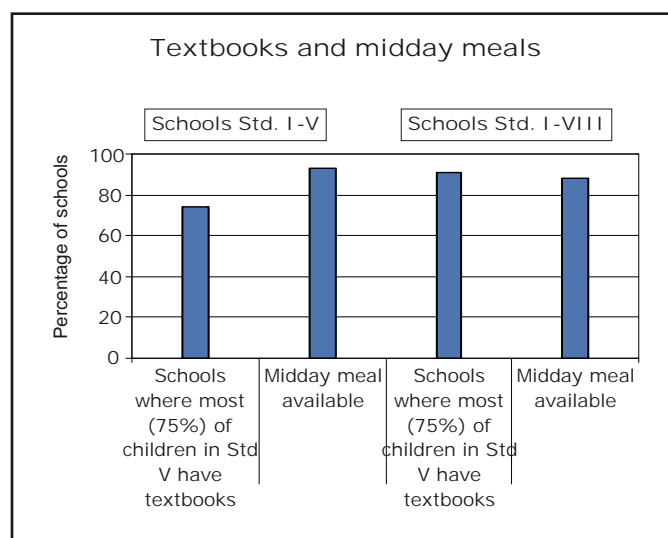
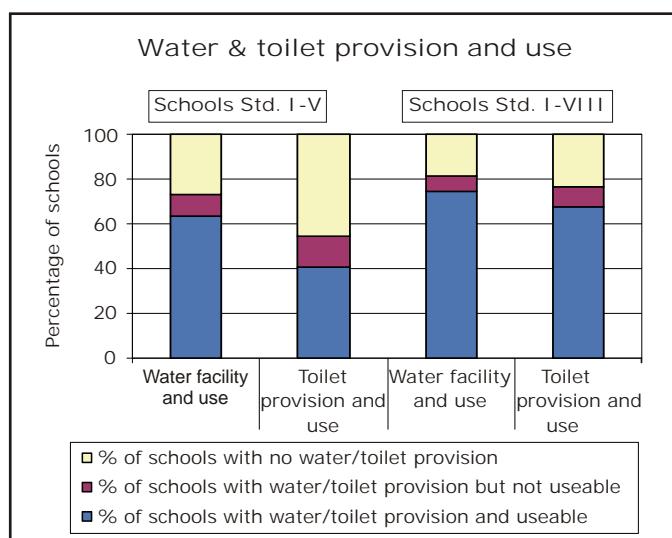
Children's attendance		
	Schools with:	
	Std. I-IV/V	Std. I - VIII
Total number of schools visited	42	400
% enrolled children attending (average)	76.5	80.5
% of schools with less than 50% of enrolled children attending	11.9	3.0



Average number of rooms available

Type of school by enrollment	% Schools visited	Std I-V rooms	Type of school by enrollment	% Schools visited	Std I-VIII rooms
<=50	26	2.7	<=150	12	4.9
51-75	26	2.6	151-250	27	7.3
76-150	28	4.2	251-350	26	9.2
151-225	21	3.6	351-450	12	10.4
>225			>450	23	13.7

Provision and use



Performance of all districts

District	All Children	Std V children		District	All Children	Std V children	
	% Out-of-school	% CAN read level - 2	% CAN solve division and subtraction		% Out-of-school	% CAN read level - 2	% CAN solve division and subtraction
Ahmadabad	7.1	50.0	11.3	Narmada	1.1	44.4	45.9
Amreli	2.2	50.0	17.9	Navsari	0.9	60.6	69.7
Anand	1.4	81.0	32.8	Panch Mahals	2.9	53.7	38.9
Banas Kantha	3.2	74.1	50.0	Patan	1.2	20.9	91.3
Bharuch	4.3	70.3	48.0	Porbandar	2.0	10.8	8.8
Bhavnagar	5.2	84.9	43.1	Rajkot	2.2	51.3	29.2
Dohad	0.2	58.1	32.3	Sabar Kantha	2.6	42.4	33.3
Gandhinagar	2.5	69.0	59.7	Surat	1.9	17.4	79.7
Jamnagar	4.9	51.1	27.7	Surendranagar	5.1	65.5	51.9
Junagadh	0.0	31.9	21.6	Tha Dangs	11.0	28.6	82.0
Kachchh	9.8	47.0	37.8	Vadodara	5.6	37.5	29.3
Kheda	2.2	52.7	18.2	Valsad	8.4	66.7	52.6
Mahesana	3.5	49.2	60.3	Gujarat State	3.6	50.4	42.3

